

A high-angle photograph of three young people lying on their stomachs on a green lawn. On the left, a young man with short brown hair, wearing a white t-shirt and a blue and black plaid shirt over his shoulders, is smiling. In the center, a young woman with dark hair, wearing a white short-sleeved button-down shirt, is laughing with her mouth open. On the right, a young woman with long blonde hair, wearing a light blue button-down shirt, is smiling. Scattered around them on the grass are various school items: an open book, a tablet with a black screen, a brown leather wallet, and another open book. A solid yellow rectangle is in the top left corner.

ANNUAL REVIEW 2018-2019

Education changes lives.
And families.
And communities.

**Country
Education
Foundation**
OF AUSTRALIA



WHO WE ARE + WHAT WE DO

Helping young Australians reach their potential

Country Education Foundation of Australia (CEF) is a national not-for-profit organisation that assists young people living in rural and regional areas to pursue their education and career goals.

We deliver grants and community support to school leavers so they can continue their education and training. In doing so, we help to ensure all young Australians have the opportunity to reach their full potential.

A large proportion of the funds CEF distributes is raised from local communities. We also work closely with corporate, philanthropic and education partners to leverage the support we provide.

In addition to grants and scholarships, CEF also produces unique online

student resources. The annual University Survival Guide and Scholarships Guide offer students and parents the tips, tools and guidance to traverse university and other further education.

Community led

Since CEF first began in Boorowa in 1993, we have expanded to include local foundations across New South Wales, Queensland, South Australia, Victoria and the Northern Territory.

This network of 44 local foundations lies at the heart of everything CEF does. Driven by teams of committed volunteers, our foundations lead fundraising efforts and distribute funds to selected local students to help cover their study costs, including textbooks, tools, accommodation, travel and other expenses.

This community-led model

successfully identifies students who need additional encouragement or who are most at risk of falling through the gaps.

Changing lives for a better tomorrow

Young rural and regional Australians are as bright and ambitious as their peers living in metropolitan centres. However, when it comes to higher education and job opportunities, many miss out because the financial, emotional and social obstacles of relocating are just too great.

But it's not just about money. For our recipients, knowing their local CEF foundation and community 'has their back' is important psychological support; around 90 per cent of our students go on to complete the course or training for which they were funded.

OUR VALUES

- To contribute to vibrant and thriving rural and regional communities where young people (16-25) of any background or ability can access the services and resources they need to fulfill their personal potential and contribute fully to the communities in which they live and the broader society.

OUR MISSION

- To promote and enable further education, career and personal development opportunities for rural youth through community-based encouragement and financial assistance. To help close the participation gap which exists between city and country students.

OUR BOARD



Nick Burton Taylor AM
Chairman
Founding Director



David Smithers AM
Treasurer
Founding Director



Julia Burton Taylor OAM
Secretary
Founding Director



Katie Walker
Director
Founding Director



Richard Rains
Director
Appointed 2016



Peita Burton Taylor
Director
Appointed 2018



Dougal Geddes
Director
Appointed 2019



**Country Education
Foundation of Australia Ltd.**
52 Hill Street, Orange
NSW 2800
ABN: 60 103 889 452
ACN: 103 889 452

OUR YEAR

CHAIRMAN'S REPORT

Our year has been marked by a number of significant events, some positive, along with great challenge and sadness.

Country Education Foundation of Australia (CEF) has been positioned onto a secure footing due to the extraordinary support we have received from an anonymous donor who, through his financial gift, has enabled us to acquire our own dedicated building to house our activities in Orange. The support made available allows us to do so unencumbered by any debt or other obligations. For a small not-for-profit organisation such as ourselves, this is a wonderful position to provide the surety for our staff and the 456 volunteers who make up our organisation.

While still a young apolitical organisation, a birthday recording 25 years of operation in 2018 is no mean feat. This has been achieved through the hard work of 44 regional Australian communities.

The challenge for an organisation such as ours is being able to sustain its relevance. With 25 years of history now behind us and our own secure premises, one must draw confidence that we are capable of continuing to grow and support the young people in regional Australia.

It is interesting to note that we have received our first bequest to continue our work. It's a testament to CEF's standing in regional Australia that we are regarded with such credibility



and affection for individuals to bequeath a portion of their estate to us. It is a rewarding endorsement of all those working within the organisation at professional and volunteer levels.

Notwithstanding the devastating effects of the drought we have managed to establish a new foundation in Warracknabeal, Victoria. This has been achieved with the enthusiastic and positive attitudes exhibited by the local community and fostered by our dear Patron, the Hon. Tim Fischer AC. It is a mark of Tim's incredible commitment that only weeks before his death he took an active role in the launch of the new foundation, which confirmed Tim's capacity to communicate at the grassroots level for what he saw as being important to country communities.

It was one of the great sadnesses to record Tim's passing. He was our Patron for over 15 years and his belief in our charity's work never waned. He understood, as did his hero Sir John Monash, the

importance of education to a nation and the need to address imbalances in opportunity for young people seeking advancement in regional Australia. He was a Patron like no other and he will be remembered as one of the key contributors in securing our current good standing.

We were excited during the year to secure a partnership with WIN Television. As regional broadcasters, they recognise the social importance of equity and education access for smaller communities.

Our influence has been at a time of profound drought and climatic challenge. Perhaps not widely understood have been the secondary effects of the drought which have passed to the younger members of farming families who have often been recruited to assist in drought feeding activities and deal with stressful family situations not normally experienced by younger people. There has been no escape because their home, family, business and friends have all been adversely affected.

Rising to this catastrophe has been a major challenge for our small organisation. In an uplifting moment, the Thyne Reid Foundation came to us with an offer of encouragement and financial assistance to our most drought-affected communities.

At the organisational level we have had some changes. Our CEO of some years, Wendy Cohen, has left our organisation and is moving to Canberra. We are indeed fortunate to have an extraordinary team of devoted professionals based in Orange with Juliet Petersen now in the

role of Acting CEO.

At the board level, we have seen the retirement of Stuart Black AM. He was with us since the beginning and helped with many of the early difficulties we faced in gaining recognition for taxation deductibility via our DGR status. We offer our heartfelt thanks to him for his contribution over so many years.

We have also seen the retirement of Oscar Oberg who has assumed new responsibilities with supportive stakeholder Wilson Asset Management. We hope to grow the relationship with Oscar's assistance and gratefully thank him for his contribution.

We welcome to the board Peita Burton Taylor as a new director. With a strong appreciation of the difficulties faced by rural students and their families, Peita is keen to see greater equity in education between city and country areas.

Following the year end, Dougal Geddes was appointed to the Board. Dougal brings great commercial knowledge and a legal background to the table. He combines this professional suite of skills with enthusiasm and energy for the work that we do and we greatly look forward to his contribution.

All of these achievements would have been impossible without an outstanding team of committed individuals. A profound thanks to the team at the national office and my fellow directors who tirelessly contribute with good humour and enthusiasm.

"[Tim Fischer] was a Patron like no other and he will be remembered as one of the key contributors in securing our current good standing after 25 years of operation..."

A handwritten signature in black ink, reading "Nick Burton Taylor".

Nicholas Burton Taylor AM
Chairman

OUR YEAR

A MESSAGE FROM THE CEO

The 2018-2019 year has been a remarkable year of growth for CEF despite the challenges facing country Australia due to ongoing drought. Its impact on rural and regional families and communities continues to stretch far and wide, where families already face inequality and exclusion due to their physical distance from schools and educational institutions.

We campaign hard to ensure drought is no barrier to the life-changing benefits of education. Our concerted efforts in pursuit of equal access to further education on various levels remain as vigilant as ever; our campaigning bolstered by the visible need.

Despite the drought, CEF has once again produced record levels of support and assistance for school leavers. Over \$1.5 million was distributed to 586 students, an increase of 18% in support for country students compared to last year.

Working together with a shared vision

Our efforts have been considerably supported by valued corporate and philanthropic partnerships with a significant boost in financial contributions this reporting period.

Commitment to education and community has seen corporate partnerships increase to over \$385,000 this year.

Evolving relationships with like-minded organisations is important to shared purpose and vision for our communities.

With dedication and commitment from our volunteers and partners, I have no doubt CEF's vision for equality in education will go from strength to strength even in the face of adversity.



A place to call home

The standout milestone has been the outright purchase of CEF's very own national premises at 52 Hill Street in Orange, NSW. This was thanks to amazing support from a generous anonymous donor.

This incredible investment in CEF's future provides a stable home for the charity's administration and provides sustainability in a time of uncertainty.

With reduced overheads and additional office space to lease, we're well positioned to gain return on investment.

Building each year

Sustainability is crucial for CEF as we continue to progress in our Strategy 2022 deliverance, which is specified under the themes of grow, empower, influence and impact.

Building our corpus is significant to this commitment and we are again pleased to report a surplus this year. This, along with acquiring our premises and establishing a capital fund goes a long way in securing the sound operation of the national foundation for many years to come.

Alongside these significant achievements, we are excited to report growth in the number of volunteers. We launched our first local foundation in Victoria, CEF Warracknabeal and Districts, in May.

Amazing students become CEF grant recipients entirely thanks to the work of our volunteers, who now number more than 450 across five states and territories. They drive grassroots fundraising, unite communities and empower young people while asking for nothing in return.

We know many of these communities and volunteers are struggling as a result of drought. We recognise their commitment to education, despite the personal challenges they face.

Our CEF volunteers epitomise country spirit and resilience and we thank them for their tireless work.

Leaving a positive mark

Impact is a word we use often. As we passionately look to add the value of education to young people's lives, 'impact' is the yardstick of our achievement.

As an organisation, we are aware that not only is financial assistance needed when talking about reducing inequality. Nurturing higher educational aspiration is playing an enhanced role as our work with education partners increases.

Recognising student success

Our organisation's greatest ambassadors are our alumni. Their stories of resilience and dedication despite challenging odds is what motivates us, communities, politicians, donors and students alike to commit in their own way to better education in Australia.

After significant work to contact all past CEF recipients last year, we are solidifying important relationships and finding exciting ways to recognise and involve our alumni.

These connections have resulted in fascinating research and kick-started many conversations regarding what 'giving back' will look like for CEF-supported students.

In an amazing first, we acknowledged student's abilities and achievements with the Origin Foundation - CEF Alumni Awards announced in November 2018. These awards reflect CEF's ongoing student support and encouragement at a community level.

Many CEF-supported students not only face challenges as a result of geographic isolation, but also adversity in their lives.



This year we have been able to bring you the heart-warming stories of Tibooburra's Cooper Lawson, Hastings' inspirational Jessica Hall and the unbridled spirit of Shoalhaven's Matilda Langford to showcase the resilience, passion and encouragement alive and well in our communities.

Speaking up when something isn't right

Government policy and inaction continually challenge community spirit.

CEF has contributed to various policy discussions over the last 12 months, proud to be a voice that advocates for greater equality in education.

We collaborated with the NSW drought taskforce, contributed to discussion on strategy papers and provided a voice on rural, regional and remote education with responses to the national Independent Review into Regional, Rural and Remote Education final report and 2019-20 Federal Budget.

We feel it's critical to be involved in these discussions to better understand Australia's evolving education landscape and build the profile of CEF's national voice. We are part of country communities,

so we need to advocate for progress towards a better tomorrow in the bush.

We couldn't do it without you

Finally, I must acknowledge the incredible contribution that you, our donors and stakeholders, make to the work we do.

It is your belief in our mission that is the difference CEF makes to the participation in further education in rural and regional communities.

Thank you for believing in CEF, in the students and the importance of education, for your willingness to help us close the education participation gap and unlock the extraordinary potential that exists in rural, regional and remote communities.

We are proud of this year's results and look forward to your company along the dusty, winding road ahead.



Juliet Petersen
Acting Chief Executive Officer



Tim Fischer, CEF Patron to the end

The Hon. Tim Fischer AC was CEF Patron for 15 years, leveraging his influence and reputation to passionately campaign for better education access.

Mr Fischer passed away in August, aged 73, after a decade-long battle with acute leukemia. He is survived by his wife Judy and sons Harrison and Dominic.

The former Deputy Prime Minister of Australia and Nationals leader was well respected either side of the political fence, remembered for his quirky nous and

endearing charm in flowing tributes following his death and at his subsequent State funeral.

He was heavily involved with CEF as Patron and will be remembered as one of our strongest advocates, a man on a pursuit to promote the life-changing opportunities education provides to the young students from rural and regional Australia.

“ Good education provides not only individuals with keys for a positive future; individual meshing cogs to create real progress but also the seeds on which the fabric of the nation can build and progress. ”

The Hon. TIM FISCHER AC



DONATE + ENGAGE

Country Education Foundation of Australia is a national education charity working in six states and territories to foster the further education, career and personal development opportunities of rural and regional youth, through community-based encouragement and financial assistance.

Web cef.org.au | **Phone** 1300 652 144

FB+ Insta @countryeducationfoundation

Twitter @CEFofAus | **LinkedIn** @CEF-Australia

STUDENT STORIES

INSPIRATION FROM OUR COMMUNITIES



“ Being first in the family to be accepted into university was very exciting.

It is hard at times to make ends meet whilst going through the drought. ”

KOBEY WARREN,
2019 Recipient of
the inaugural CEF
Paroo Wal Dunsdon
Memorial Scholarship



There's no stopping Cooper in his mission to give back

Hailing from Tibooburra, three hours north of Broken Hill, **first year student Cooper Lawson** is first in his family to attend university. In receiving the 2019 McLean Foundation Scholarship, he acknowledges the challenges over which he's triumphed.

It seems nothing will stop Cooper Lawson from achieving his ambition of working in the criminal justice system after he finishes a Bachelor of Criminology degree at Flinders University in Adelaide – certainly not distance or even a life-long hearing impairment.

Avid reader, keen fisherman and true-crime aficionado, Cooper grew up on Klondyke Station, just north of the little opal mining town White Cliffs, about 300km north-east of Broken Hill. He completed his HSC at Broken Hill High School last year.

Not only did distance create barriers for Cooper, but his path to university was made more difficult by a medical condition which has left him partially deaf.

“Since I was little, I've always been partially deaf. While I was living eight hours away from home to go to Yanco Agricultural High School, I was diagnosed with a tumour in my middle ear, called cholesteatoma. I had to move back home and continue schooling through distance education to allow me to have surgery and recover,” he said.

“It was a very scary time because it really could've affected me a lot, especially all

the nerves and bones the surgeon had to work around. I had the surgery to reconstruct my ear in 2016 and had to adapt to using hearing aids in early 2017. It was a big revelation for me, I could finally hear.”

“This ordeal has helped me empathise a lot more, and especially allowed me to appreciate what little we are given sometimes. Because of all the surgeries and recovery, I had to repeat Year 11 to have a better shot in a public school. This helped me reach my goal of getting accepted into my first preference university course, criminology, and helped me get ready to go.”

The McLean Foundation Scholarship supports students from Broken Hill, Far West NSW who aspire to receive a university education.

As Cooper began university, his excitement couldn't be contained, demonstrating his ambition to make the McLean Foundation proud.

“I would like to thank CEF and the McLean Foundation. You can't have something without giving it a go,” he said.



Jess set to engineer a brighter, bolder future for everyone

Saving lives by creating artificial organs or through revolutionary stem cell research are dream achievements that first year biomedical engineering student Jessica Hall feels are now within reach.

The 18-year-old achieved an ATAR of 92.4 in 2018, after completing the Higher School Certificate at Great Lakes Senior College.

She's now studying a Bachelor of Science (Bioengineering Systems) at Melbourne University, a 14-hour drive away from her home town of Forster on the NSW Mid-North Coast.

Her family unit became very close after her parents' divorce, Jess saying that her move to Melbourne was particularly poignant as she was "last to leave the nest".

"It definitely has taken an emotional toll...it's very hard to move from a small country town to Melbourne. When I came here, I knew absolutely no-one."

As only the second person in her immediate family to go to university, Jess is determined not to let "significant financial pressures" – or the tyranny of distance – get in the way of her further education.

As a high-achieving teen, Jess keenly felt pressure to perform well in her HSC on behalf of herself and for her family too.

"I want to make Country Education Foundation of Australia proud. I want to make my Mum proud. I want to make Forster proud."

Jessica received a \$2400 Great Lakes Education Fund grant along with a \$2500 CEF national scholarship, sponsored by the Audi Foundation for STEM-related study.

» **Head to cef.org.au for the full story on Jess's education journey.**

Matilda already achieving great things for CEF

Matilda Langford, 19, is one of six children cared for by her single mum in Mollmook Beach.

Currently in her first year studying a double degree of law and arts (majoring in politics) at the University of Sydney (USYD), Matilda has been pitched to be Australia's first female Indigenous Prime Minister.

She dreams of creating widespread change for both her local Shoalhaven community and for wider Aboriginal Australia.

"My passion and drive are rooted strongly in a constitutionally-recognised voice for Aboriginal people, and to be able to address the issues surrounding health, incarceration and education for Australia's ATSI population," she said.

And despite initially being overwhelmed by the prospect of moving from her hometown area to maintain the workload of this double degree, she seems to have settled in well. Matilda works as a university student ambassador and assists with the Bunga Barrabugu Winter Program.

She shared the voice of her Dharawal Aboriginal people at the National Indigenous Law Conference in Darwin during August and represented CEF on a USYD outreach tour of western NSW which was organised with the national office and CEF Walgett.

Matilda received a \$2400 Shoalhaven Education Fund grant along with a \$4000 University of Sydney and CEF scholarship.



FOUNDATION FOCUS

HARD WORK, DEDICATION AND GROWTH

We had **456 active volunteers** throughout the year tirelessly working within their communities to provide grants, opportunities and mentorship to school leavers within their regions.

A constant source of inspiration, our volunteers are bona fide members of the community; teachers, business leaders, local identities, passionate people from all walks of life who know their local area and the challenges their school leavers face.

Most recently, many of our CEF alumni are returning to their communities and 'giving back' by volunteering on their local committees, highlighting the cycle of our support.

Our foundation's fundraising capacities have certainly felt the effects of the current drought. While also dealing with the normal funding fatigue each rural and regional community faces, they have still raised over \$684,000 locally this year for their students.

2018/19 HIGHLIGHTS

- » Road trips to visit our foundations in Gwydir, West Wyalong, Coleambally/Darlington Point, Edward River, Temora and Cootamundra
- » Launched our first Victorian foundation, CEF Warracknabeal
- » Worked with our volunteers to ensure regulatory compliance
- » Updated the CEF local foundations charter and revised an Establishment and Procedures Manual
- » 60% of our local foundations have adopted the national brand
- » Committee engagement funding from the Raymond E. Purves Foundation and Findex Community Fund
- » Launched the Committee Management Hub, an online portal for committee members to manage their grant applications
- » Created a committee member only Facebook group to increase collaboration
- » Produced a weekly e-newsletter, the Midweek Muster, to engage and inform committee members.

GOALS FOR 2019/20

- » Assist committees with succession planning, recruiting and retaining new members
- » Create customisable volunteer induction manuals
- » Implement an online marketing and fundraising manual
- » Continue to engage and recognise our volunteers
- » Increase CEF national brand adoption to over 75%.

RECOGNISING OUR VOLUNTEERS

Each year, CEF recognises volunteers that have gone above and beyond. Nominated by their peers, the Katie Walker Outstanding Service Awards are awarded in recognition of their dedication and untiring efforts addressing and raising awareness of the issues facing rural youth pursuing their dream of further education.

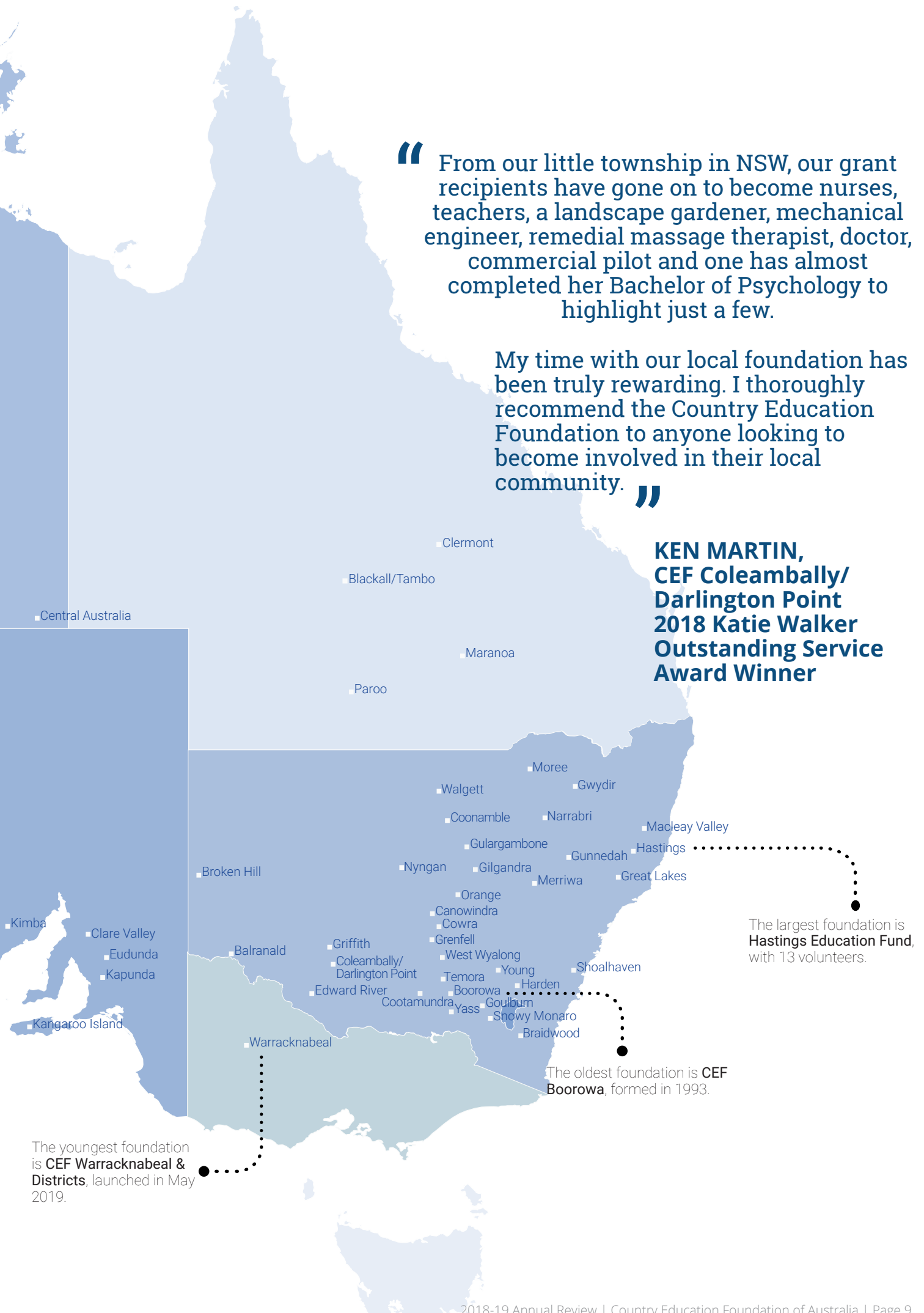
The 2018 winners were:

- » John Trist, CEF Edward River
Chen Gaul, Hastings Education Fund
Ken Martin, CEF Coleambally/Darlington Point

“ From our little township in NSW, our grant recipients have gone on to become nurses, teachers, a landscape gardener, mechanical engineer, remedial massage therapist, doctor, commercial pilot and one has almost completed her Bachelor of Psychology to highlight just a few.

My time with our local foundation has been truly rewarding. I thoroughly recommend the Country Education Foundation to anyone looking to become involved in their local community. ”

**KEN MARTIN,
CEF Coleambally/
Darlington Point
2018 Katie Walker
Outstanding Service
Award Winner**



DROUGHT SUPPORT

There are a few truths about living in the country versus the city. On the upside, the air is fresher. There is no peak hour traffic. You know your neighbours. There's a distinctive sense of camaraderie, to pull together through whatever tough hand is dealt.

On the downside, petrol is more expensive. The survival of our fabulous country economies is at the mercy of the weather. And, if you want to access the full range of education options after high school, chances are you must leave home.

Just a few decades ago, moving out of home to study or take up a new job was a normal rite of passage for all school leavers, both in the city and the country.

Changing trends are emerging for newer generations. Faced with prohibitive costs of accommodation and more relaxed expectations about what it means to be independent, young people in our towns are choosing to stay in the family home for longer and are putting off the financial and emotional burdens of moving out, sometimes until their 30s.

But many students in regional and rural Australia don't have the same options. Because of where they live, participating in post-school education and training is more challenging than ever.

Recent studies show there's lower school completion rates in rural, regional and remote (RRR) areas, with a 7% gap in university participation between city and country kids, meaning tens of thousands of young people are missing out. Additionally, regional students are 10%



Rural, regional and remote communities in the spotlight

less likely to aspire to attend university.

On top of it all, drought is biting hard in many parts of the country, making further education for financially stretched rural and regional families much more difficult.

All these factors mean equity in higher education is becoming a pipedream.

But there is some hope, coming in the form of a 10-year strategy to bridge the further education divide between country and metropolitan students handed down by the Independent Review into Regional, Rural and Remote Education (IRRRRE). CEF has been contributing to the conversation since 2017 and made submissions to the review panel's final report in the last year.

Several of the focus areas and the subsequent recommendations align with the work of CEF and our partners. We support young people in the crucial

transition from high school to tertiary education, training and jobs.

In principal, CEF accepts the need to establish a Regional, Rural and Remote Education Commissioner. Provided the position is imbued with the requisite authority to drive change and difference, then we believe there is benefit.

While CEF does not receive government funding, we work alongside our valued partners and with various universities to support country students and their communities via our network of volunteers across 44 regions of Australia.

"We believe that where you grew up or went to school, should never be a barrier to unlocking your full potential. All young Australians, no matter what their postcode, should be able to dream big and aspire to careers which reflect their individual talents and passions," said CEF Acting CEO, Juliet Petersen.

DONATE TODAY

HELP OUR YOUNG PEOPLE THINK
BEYOND THE DROUGHT

www.cef.org.au



EDUCATION JOURNEY

WHERE A COMMON GOAL CAN LEAD

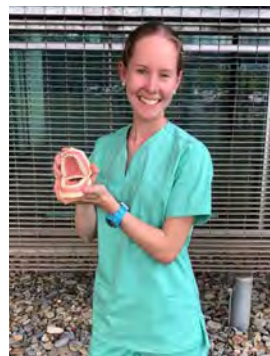
Commitment to education and community has seen corporate partnerships increase to over \$385,000 this year.

Remaining true to our grassroots model, philanthropic funds have been directed straight to our foundations to bolster local revenue raising.

CEF is now working with an increased number of education partners to facilitate informal mentoring, attendance at transition programs and access to various engagement initiatives in a bid to inspire educational aspiration and attainment for students within the CEF footprint.

In working with our university education partners, the CEF national office coordinated four meaningful university experience camps this reporting period, with high school students from CEF foundations visiting Canberra, Macquarie, Swinburne and Sydney Universities.

These partnerships and new approaches are already showing results. For example, there has been a 300% increase in the number of CEF grant recipients attending the University of Canberra, following the introduction of a multi-faceted partnership with this institution.



LAURA PURVIS,
2019 CEF
Clermont &
District
Education
Group
recipient

“ I would like to thank you very much for your kind support and also let you know that I will be doing my very best as I learn to be a competent and hopefully great dentist. ”

Inaugural Origin Foundation CEF Alumni Award winners expose amazing talent

CEF-supported students were nominated by their CEF local foundation for one of four awards in the first year of CEF Alumni Awards at the end of 2018.

Fantastic talent was recognised in all nominations and has led the way for an annual celebration of the achievement of CEF students.

CEF announced its inaugural Alumni Award winners last November, with support from the Origin Foundation.

Each recipient was nominated by local foundation members who supported these alumni during their studies.

CEF is proud to acknowledge the determination, talent, passion and amazing achievements of our alumni.

- » **Origin Foundation CEF Alumnus of the Year**
Dr Ceridwen Boel, Yass
- » **Origin Foundation CEF Community Alumni Champion**
Crystal Stewart, Torrens Valley



- » **Origin Foundation CEF Young Achiever**
Dr Jessica Verwey, Griffith

- » **Origin Foundation CEF Rising Star**
Jacob Dennis, Walgett

CEF all-rounder and Board member Katie Walker said “after over 20 years of involvement with Country Education Foundation of Australia, it’s rewarding to see our alumni recognised for the work they are doing. This bodes well for the future of CEF.”

CEF Acting CEO Juliet Petersen is proud to acknowledge the impact of local

CEF foundations on the lives of these successful young people, and on the lives of the many more CEF alumni out there.

“These students are a testament to why all CEF volunteers do what they do. Why we continue to work hard to fundraise throughout Australia. These students are examples of where support and encouragement can lead,” she said.

“The fact Crystal and Jessica are now members of their local CEF communities in Kangaroo Island and Griffith, illustrates the next generation of energy and enthusiasm for rural and regional education that’s coming through.”

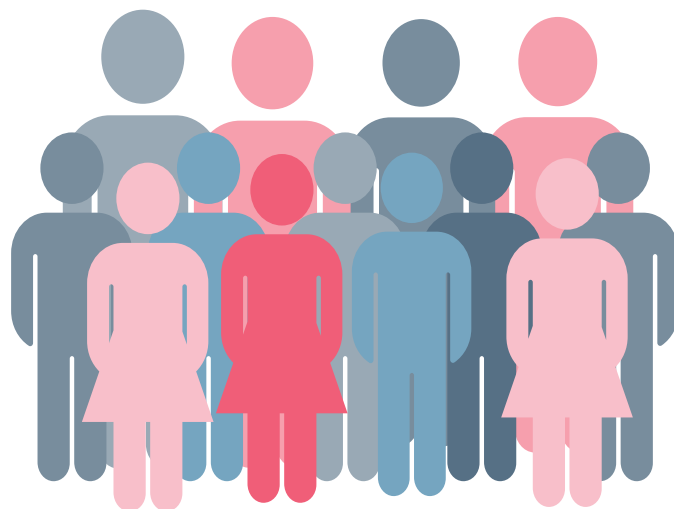
REACH + IMPACT REPORT CARD

OUR SUCCESS STORIES ARE CONTINUALLY EVOLVING

In 2019

586

Individual students awarded grants or scholarships

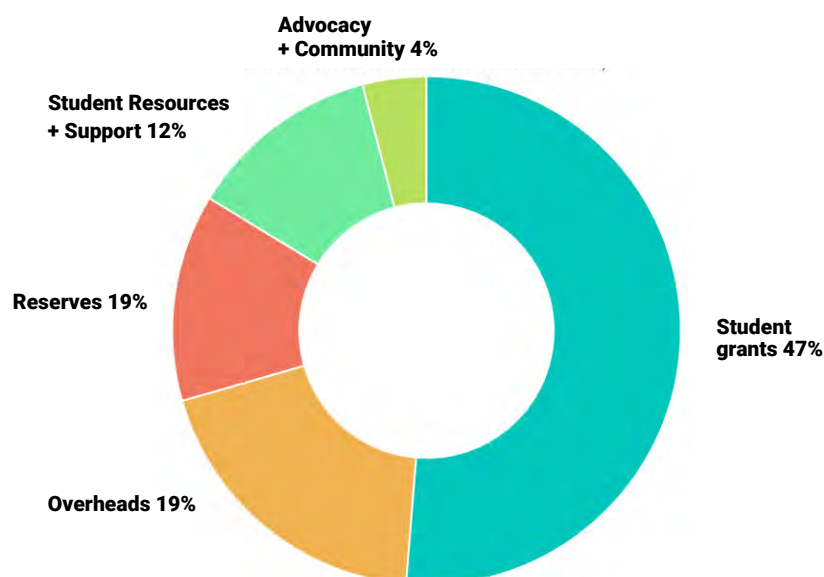


Value of grants given

Value of education partner funding

\$1,166,994 + \$401,128
= \$1,568,122

USE OF TOTAL INCOME RAISED ACROSS THE CEF FAMILY



During the year (ended 30 June 2019) Country Education Foundation of Australia continued to raise funds for investment in the education of rural and regional students.

The collective fundraising efforts have seen support distributed to students through a network of more than 44 local foundations which are run by their many loyal volunteers.

The costs of operations have also been carefully managed throughout the year.

Overhead expenses across the network of organisations making up the Country Education Foundation have been restricted to 19 per cent of income.

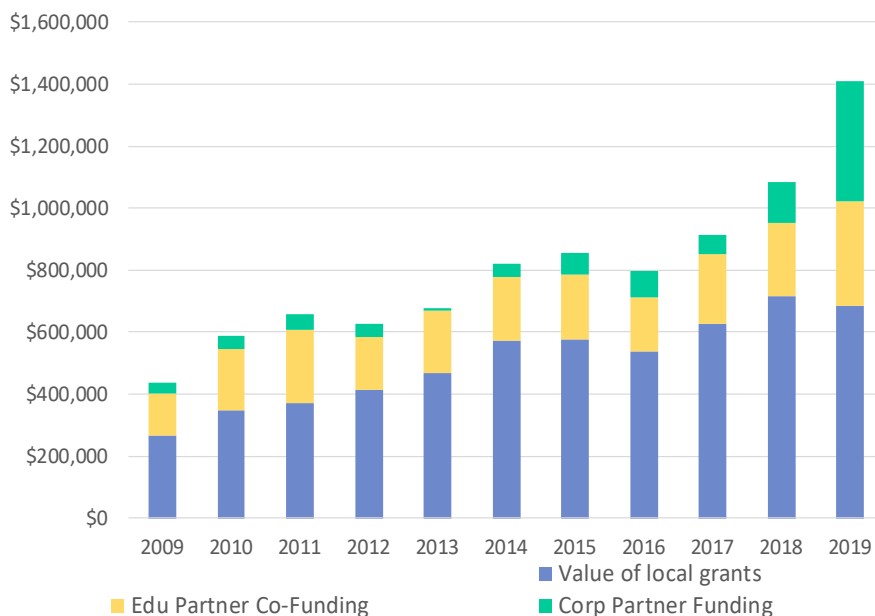
SINCE 1993

\$10,937,894

in financial support through

5469

individual grants and scholarships



In the past 10 years we have seen progressive and sustained growth. Year upon year CEF has awarded more dollar value to rural and regional students.

“ Belief in education and CEF's mission is at the essence of our local grassroots fundraising right through to support from Australia's leading corporations. ”

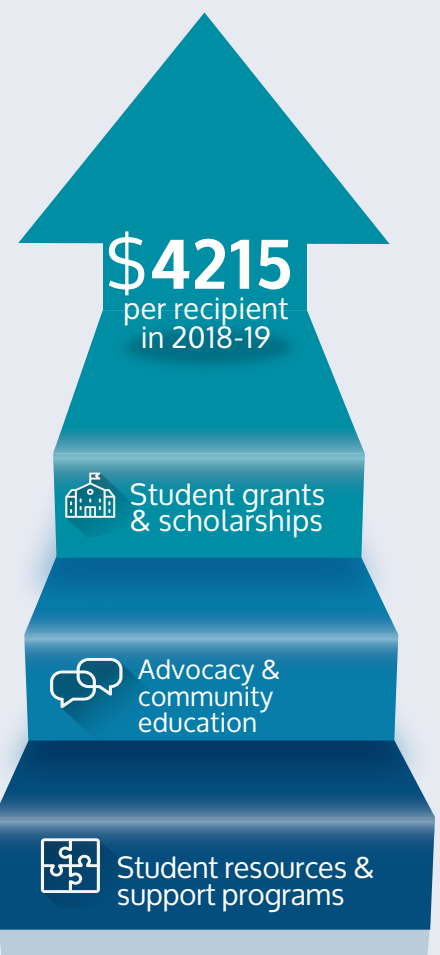
JULIET PETERSEN,
CEF Acting CEO

Boost to tertiary education partnerships offer more significant student support

Country Education Foundation of Australia (CEF) directs all of its funds and efforts to helping young people in rural and regional Australia to further their education and training.

Through the collective efforts of CEF and our local foundations our support is valued at an average of **\$4215 per young person in 2019**.

This support is made up of funds through community grants and national scholarships, resources, programs and advocacy which advances outcomes for students and trainees in rural and regional Australia.



SUPPORTERS

In addition to the contribution our volunteer foundations receive from their communities, businesses and donors, CEF received support from generous individuals as well as corporate, philanthropic and university partners in 2018-19.

Major donors and partners:

- Alinta Energy
- Anonymous
- Assyrian Church of the East Relief Organisation (ACERO)
- Audi Foundation (principal partner)
- AWKID
- Burton Taylor PPF Foundation
- CAGES Foundation
- CSU Ag Rugby Club
- Daniel and Helen Gauchat
- Eureka Benevolent Foundation
- Gina and Christopher Grubb
- Findex Community Fund
- James N Kirby Foundation
- Liveris Family
- The Loder Foundation
- McLean Foundation
- Millett Family Foundation
- NSW Country Eagles
- Profield Foundation
- The Raymond E. Purves Foundation
- Chris Roberts
- SC Maple-Brown
- SELX
- SK&YY Cheung Family Foundation
- David Smithers
- The Snow Foundation
- The Vernon Foundation
- Thyne Reid Foundation
- Charles Warman Foundation
- Wilson Asset Management
- Wilson Foundation
- Zagora Foundation

Pro Bono

- Boyce Chartered Accountants
- Origin Foundation
- Sydney Business Lawyers
- Sydney Theatre Company
- WIN Television

Education

- Australian Catholic University
- Australian National University
- Charles Sturt University
- Flinders University
- Griffith University
- James Cook University
- LaTrobe University
- Macquarie University
- Queensland University of Technology
- Southern Cross University
- Swinburne University of Technology
- University of Canberra
- The University of Newcastle
- The University of New England
- University of South Australia
- St Andrew's College
- The University of Sydney
- Three Rivers UDRH
- Western Sydney University

WHY OUR PARTNERS SUPPORT US:

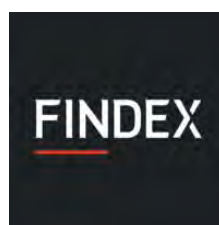


Charles Sturt
University

We are passionate about supporting the next generation of health professionals to live, study and work rurally. There is a clear alignment between the Country Education Foundation, Three Rivers University Department of Rural Health, and Charles Sturt University. We believe that in trusting rural young people and supporting their communities, we can equip a resilient and passionate group of individuals to become a thriving and dynamic community of practice; and that we can do this for the bush, in the bush.

Dr Pip Southwell

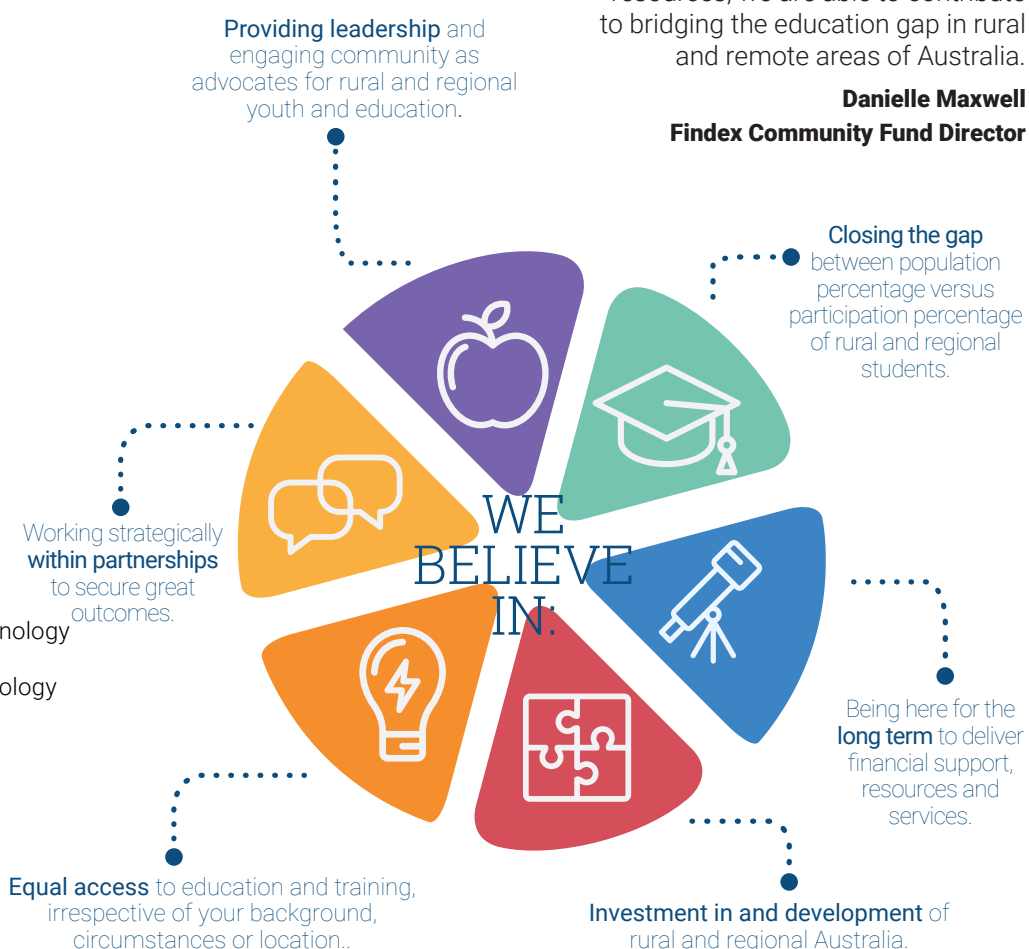
**Three Rivers University Department of Rural Health -
Charles Sturt University**



Connecting young people with potential they didn't know existed is a focus for the Findex Community Fund. Through empowerment, education and partnership with Country Education Foundation of Australia (CEF) which helps rural and regional youth access education, training and jobs through grants, scholarships, support services and resources, we are able to contribute to bridging the education gap in rural and remote areas of Australia.

Danielle Maxwell

Findex Community Fund Director



2018-19 FINANCIALS CONDENSED

COUNTRY EDUCATION FOUNDATION OF AUSTRALIA LTD

	2018-19	2017-18
Funds we raised		
Donations to program funding	1,784,000	1,453,000
Donation to build our future	770,000	472,000
Fundraising events	56,000	78,000
Income from funds invested	65,000	33,000
Other income	159,000	107,000
	<hr/> 2,834,000	<hr/> 2,143,000
What we spent		
Distributed to regional foundations for students	1,184,000	858,000
Student resources	32,000	114,000
Other programs to support students	257,000	251,000
Advocacy and community education	96,000	80,000
Fundraising events	18,000	29,000
Fundraising, accounting and administration	396,000	304,000
Depreciation, amortisation	27,000	27,000
	<hr/> 2,010,000	<hr/> 1,663,000
Change in value of our investments	(3,000)	(11,000)
Retained for ongoing initiatives	821,000	469,000
What we own		
Cash	1,013,000	1,199,000
Investments	296,000	299,000
Land & building	1,058,000	
Other assets including intangibles	33,000	30,000
	<hr/> 2,400,000	<hr/> 1,528,000
Sundry payables and provisions	381,000	330,000
Our net assets	<hr/> 2,019,000	<hr/> 1,198,000

In addition to the income reported in the condensed financial report our network of 44 foundations individually raise money to support their local beneficiaries.

To read a copy of the Country Education of Australia's full audited financial statements visit www.cef.org.au



COUNTRY EDUCATION FOUNDATION OF AUSTRALIA
PO BOX 245 ORANGE, NSW 2800
(02) 6362 3162
info@cef.org.au | www.cef.org.au
ABN: 60 103 889 452

Country Education of Australia is a registered charity with Deductible Gift Recipient (DGR1) status.
© 2019 Country Education Foundation of Australia

