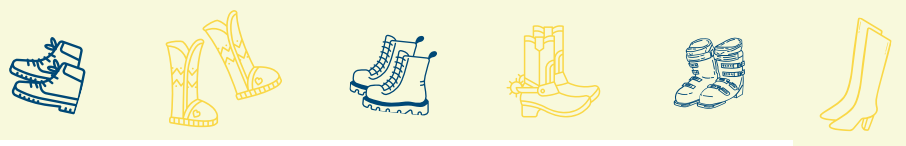


# Boot Bash!

Kickin' it for education equality



## Why we need to give Clancy a kickstart!

**Name:** Colin



**Home town/  
suburb:**  
Bondi Beach,  
NSW

**Education institution:**  
University of Sydney

**Distance to institution  
from home:** 6km

**Travel time:** 1 hour by PT

**Lives:** At home

**Weekly rent:** \$0

**Weekly groceries:** \$0

**Weekly work hours:** 12

**Cost of travel to  
institution from home:**  
\$8 return by PT

**Name:** Clancy



**Home town/  
suburb:**  
Nyngan,  
NSW

**Education institution:**  
University of Sydney

**Distance to institution from  
home:** 560km

**Travel time:** 9 hours by PT

**Lives:** Student residence

**Weekly rent:** \$366

**Weekly groceries:** \$140

**Weekly work hours:** 12

**Cost of travel to institution  
from home:**  
\$130 return by PT



Disclaimer: people depicted in this material are not real.



Donate to give a CEF student a kickstart

**Country  
Education  
Foundation**  
OF AUSTRALIA



# Boot Bash!

Kickin' it for education equality

## Fact Sheet

**Distance to institution from home:** Calculated using Google Maps.

**Travel time:** Information from Transport for NSW as at 20/02/2024.

**Weekly rent:** Based on cost of 'Regiment' accommodation at the University of Sydney as at 20/02/2024.

**Weekly groceries:** Based on the average cost of groceries for a single person household, Finder Consumer Sentiment Tracker 2024.

**Weekly work hours:** Median number of hours worked by full time students in Australia according to 2017 Universities Australia Student Finances Survey.

**Cost of travel to institution from home:** Information from Transport for NSW as at 20/02/2024.



Donate to give a CEF student a kickstart

Country  
Education  
Foundation  
OF AUSTRALIA



# Boot Bash!

Kickin' it for education equality

## Why we need to give Claire a kickstart!

**Name:** Vicki



**Home town/  
suburb:**  
Glebe,  
NSW

**Education institution:**  
TAFE Ultimo

**Distance to institution  
from home:** 2km

**Travel time:** 20 minutes by  
PT

**Lives:** At home

**Weekly rent:** \$0

**Weekly groceries:** \$0

**Weekly work hours:** 12

**Cost of travel to  
institution from home:**  
\$8 return by PT

**Name:** Claire



**Home town/  
suburb:**  
Broken Hill,  
NSW

**Education institution:**  
TAFE Ultimo

**Distance to institution  
from home:** 1,140km

**Travel time:** 2.5 hours by  
plane

**Lives:** Shared house

**Weekly rent:** \$292

**Weekly groceries:** \$140

**Weekly work hours:** 12

**Cost of travel to  
institution from home:**  
\$760 return by plane



Donate to give a CEF student a kickstart

Country  
Education  
Foundation  
OF AUSTRALIA



Disclaimer: people depicted in this material are not real.

# Boot Bash!

Kickin' it for education equality

## Fact Sheet

**Distance to institution from home:** Calculated using Google Maps.

**Travel time:** PT travel time from Transport for NSW as at 20/02/2024.

Plane travel time from Qantas as at 20/02/2024.

**Weekly rent:** Based on the average weekly share house rent in Sydney according to the cost of living calculator at [www.studyaustralia.gov.au](http://www.studyaustralia.gov.au).

**Weekly groceries:** Based on the average cost of groceries for a single person household, Finder Consumer Sentiment Tracker 2024

**Weekly work hours:** Median number of hours worked by full time students in Australia according to 2017 Universities Australia Student Finances Survey.

**Cost of travel to institution from home:** Information from Transport for NSW as at 20/02/2024.

Flight pricing based on pricing on [www.webjet.com.au](http://www.webjet.com.au) as at 20/02/2024.



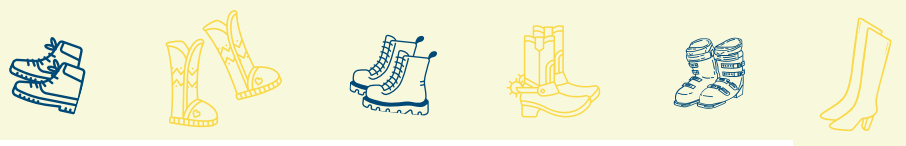
Donate to give a CEF student a kickstart

Country  
Education  
Foundation  
OF AUSTRALIA



# Boot Bash!

Kickin' it for education equality



## Why we need to give Eleanor a kickstart!

**Name:** Alice



**Home town/  
suburb:**  
Glenelg,  
SA

**Education institution:**  
University of Adelaide

**Distance to institution  
from home:** 13km

**Travel time:** 1 hour by PT

**Lives:** At home

**Weekly rent:** \$0

**Weekly groceries:** \$0

**Weekly work hours:** 12

**Cost of travel to  
institution from home:**  
\$4 return by PT

**Name:** Eleanor



**Home town/  
suburb:**  
Kimba,  
SA

**Education institution:**  
University of Adelaide

**Distance to university from  
home:** 462km

**Travel time:** 7 hours by PT

**Lives:** Shared house

**Weekly rent:** \$227

**Weekly groceries:** \$140

**Weekly work hours:** 12

**Cost of travel to institution  
from home:**  
\$110 return by PT



Disclaimer: people depicted in this material are not real.



Donate to give a CEF student a kickstart

Country  
Education  
Foundation  
OF AUSTRALIA



# Boot Bash!

Kickin' it for education equality

## Fact Sheet

**Distance to institution from home:** Calculated using Google Maps.

**Travel time:** Alice: Information from Adelaide Metro as at 20/02/2024.

Eleanor: Information from Stateliner Premier Coach Services as at 20/02/2024.

**Weekly rent:** Based on the average weekly share house rent in Adelaide according to the cost of living calculator at [www.studyaustralia.gov.au](http://www.studyaustralia.gov.au).

**Weekly groceries:** Based on the average cost of groceries for a single person household, Finder Consumer Sentiment Tracker 2024.

**Weekly work hours:** Median number of hours worked by full time students in Australia according to 2017 Universities Australia Student Finances Survey.

**Cost of travel to institution from home:** Alice: pricing from Adelaide Metro as at 20/02/2024.

Eleanor: pricing from Stateliner Premier Coach Services as at 20/02/2024.



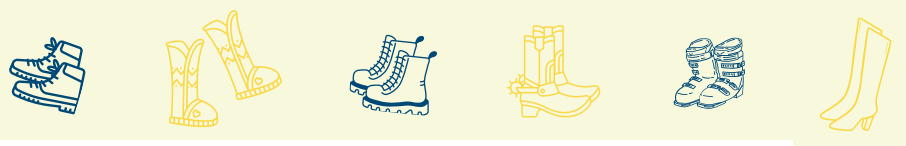
Donate to give a CEF student a kickstart

Country  
Education  
Foundation  
OF AUSTRALIA



# Boot Bash!

Kickin' it for education equality



## Why we need to give Troy a kickstart!

**Name:** Toby



**Home town/suburb:**  
Brisbane, QLD

**Education institution:**  
Queensland University of Technology

**Distance to institution from home:** 13km

**Travel time:** 15 minutes by PT

**Lives:** At home

**Weekly rent:** \$0

**Weekly groceries:** \$0

**Weekly work hours:** 12

**Cost of travel to institution from home:**  
\$4 return by PT

**Name:** Troy



**Home town/suburb:**  
Alice Springs, NT

**Education institution:**  
Queensland University of Technology

**Distance to university from home:** 2,993km

**Travel time:** 3 hours by plane

**Lives:** Student residence

**Weekly rent:** \$229

**Weekly groceries:** \$140

**Weekly work hours:** 12

**Cost of travel to institution from home:**  
\$1200 return by plane

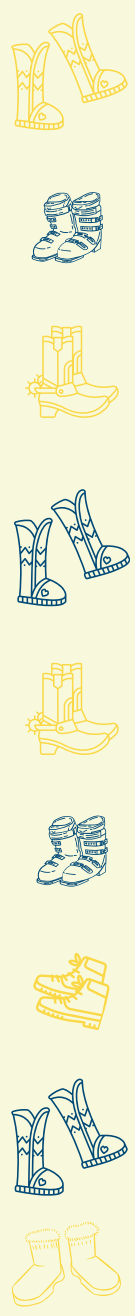


Disclaimer: people depicted in this material are not real.



Donate to give a CEF student a kickstart

Country Education Foundation OF AUSTRALIA



# Boot Bash!

Kickin' it for  
education equality

## Fact Sheet

**Distance to institution from home:** Calculated using Google Maps.

**Travel time:** PT travel time from Transport for NSW as at 20/02/2024.

Plane travel time from Qantas as at 20/02/2024.

**Weekly rent:** Based on the price of rent at of a twin loft room at UniLodge, an accommodation provider of QUT.

**Weekly groceries:** Based on the average cost of groceries for a single person household, Finder Consumer Sentiment Tracker 2024.

**Weekly work hours:** Median number of hours worked by full time students in Australia according to 2017 Universities Australia Student Finances Survey.

**Cost of travel to institution from home:** Information from Translink as at 20/02/2024.

Flight pricing based on pricing on [www.webjet.com.au](http://www.webjet.com.au) as at 20/02/2024.



Donate to give a CEF student a kickstart

Country  
Education  
Foundation  
OF AUSTRALIA

